

Inclusion Policy



Winter Park High School

INTERNATIONAL BACCALAUREATE PROGRAMME

Rationale/Purpose

The IB Programme at Winter Park High School endeavors to ensure that all students are provided the support necessary to allow them to achieve academic success and reach their full potential as members of Winter Park High School. This rationale is supported by the Winter Park High School vision statement: “To ensure every student has a promising and successful future”. As an IB World school the mission statement of WPHS includes: “With the support of families and the community, we create enriching and diverse pathways that lead our students to success.”

This document is designed to communicate to all of our stakeholders – parents, students, teachers and administrators – the expectations for creating and maintaining an educational environment for all IB students as required by IBO and supported by Orange County Public Schools. It provides clear guidelines by defining appropriate vision, goals, and practices within the IB programme at Winter Park High School. This document also establishes clear responsibilities of all stakeholders.

Philosophy

It is the philosophy of IBO, Orange County Public Schools, and the IB Programme at Winter Park High School that every student can learn. Every student should also be supported in learning the creative, thinking, and learning skills that are necessary for success as adults. Goals include making them self-sufficient, caring and reflective members of society, and productive citizens in the global marketplace. It is our vision therefore, to provide learner centered IB instruction wherein all students receive the necessary resources, guidance, accommodations, and differentiated instruction needed for personal success.

Inclusion Policy Goals

The goals of the Inclusion Policy are:

- Adhere to national, state, and local laws regarding Exceptional Student Education.
- Ensure that the special needs of our students are identified early, assessed, and provided for.
- Clarify the expectations of all stakeholders.
- Identify roles and responsibilities of stakeholders.
- Assist all students in accessing all elements of the school curriculum and assessment policy.

The administration, faculty, and staff at Winter Park High School acknowledge that:

- Our students have different educational and learning needs, abilities, and goals.
- Students gain knowledge and skills at different rates and through different means.
- All students are capable of learning, and they are unique;
- Our school welcomes all students.

Who are the students

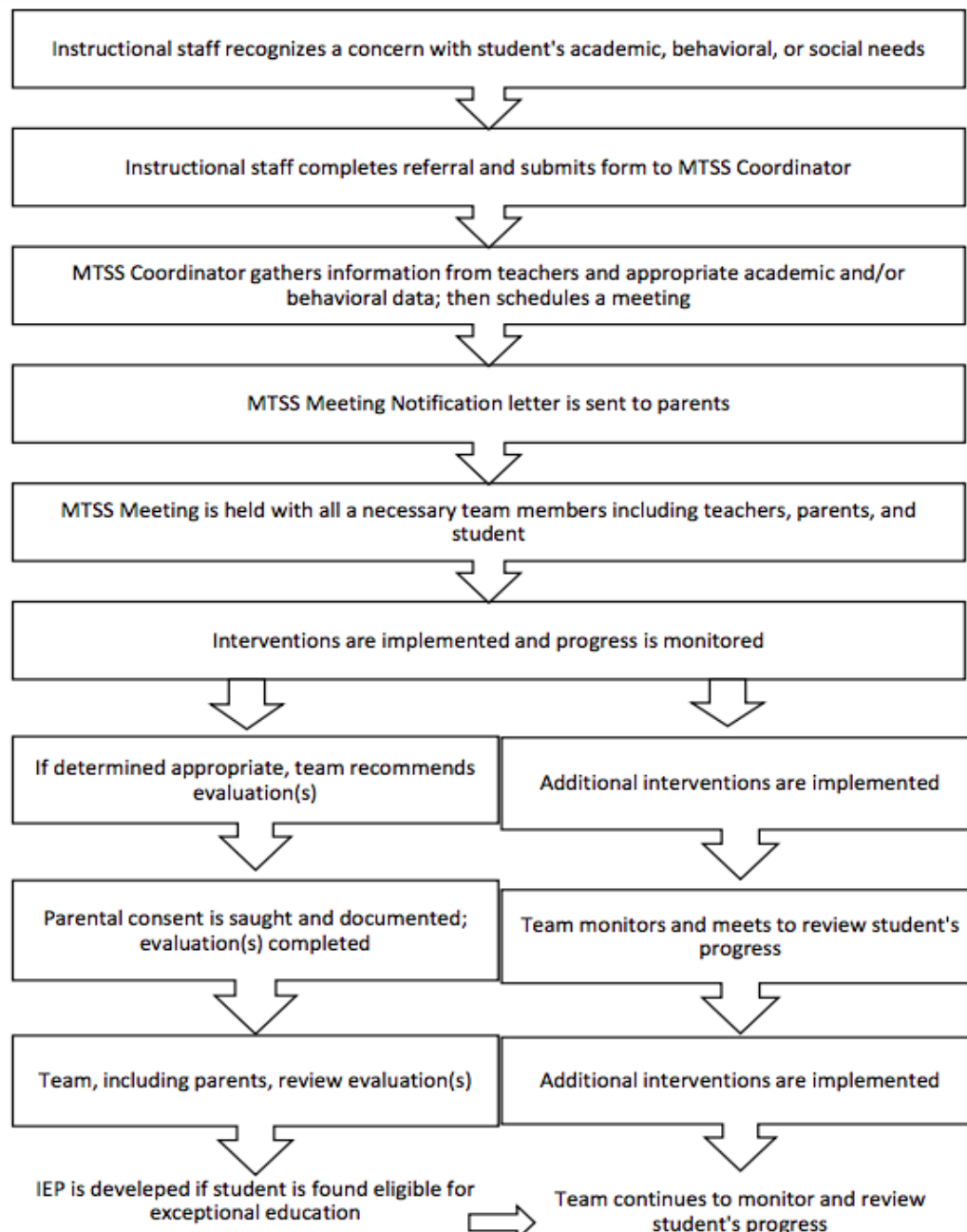
Learner variability is a term that embraces all students and does not exclude on the grounds of strengths, challenges, age, social status, economic status, language, gender, race, ethnicity or sexuality. Taking into account changing histories, circumstances and contexts, learner variability represents the shifting combination of strengths and challenges that learners experience.

Within this understanding it is recognized that there is no average brain and thus no average student. Learner variability upholds that categorizing students according to diagnostic labels (ADHD, dyslexia, and so on) does not provide sound indicators of a student's potential or appropriate teaching strategies.

Identification and Review:

All Orange County Public Schools implement a multi-tiered system of supports, MTSS, to provide interventions to students in need. The MTSS team monitors student's progress and may identify a need for further evaluations if the team suspects a disability.

When families provide medical documentation, the team may develop an Individualized Education Plan (IEP), Emotional Plan (EP) or a 504 Plan to provide the appropriate accommodations to meet student needs. 504 and IEP's are re-evaluated annually. EP's are evaluated every two-three years. During the evaluations, evidence including assessment scores, teacher feedback forms, and medical reports are reviewed to determine the appropriateness of the plan and possible dismissal from support services.



Roles & Responsibilities

Responsibilities of the School

- The school will work with the Exceptional Student Services of Orange County Public Schools to make sure the programme is in compliance with federal and local laws regarding students with special educational needs.
- The school will provide guidance to students with special education needs to help them make informed decisions concerning application to our program.
- The school, along with the Exceptional Student Services of Orange County Public Schools, will raise staff awareness of the needs of our exceptional students.
- The school will provide resources for the implementation and continuation of the Inclusion Policy.
- School counselors, along with the school's Staffing Specialist, and in conjunction with the Exceptional Student Services of Orange County Public Schools will provide the teachers with all IEP'S and 504 plan documentation.
- Exceptional Student Services personnel, school guidance counselors, Staffing Specialist, and support facilitators will provide updates and host meetings for IEP and 504 reviews.
- The school will facilitate the provision of appropriate accommodations as outlined by Exceptional Student Services of Orange County Public Schools.

Responsibilities of the IB Coordinator

- The IB Coordinator will apply to the IB for students' accommodations in assessment type and circumstances. This process is as follows:
 - *August - September - The IB Coordinator works with the IB teachers, Special Needs Staffing Specialist, 504 coordinators, and gifted 503 coordinator to identify all students in the IB programme that are eligible for accommodations.*
 - *September - October - The IB Coordinator works with the appropriate staff members to collect the required paperwork for each student to apply for accommodations for the IB Assessment session.*
 - *October - November - The IB Coordinator submits all required paperwork to IBIS to request accommodations for the students.*
- The IB Coordinator will work collaboratively with faculty to support students with special education needs.
- The IB Coordinator will provide examination accommodations as needed and approved by the IBO.
- The IB Coordinator will maintain discretion and confidence in providing special education needs services.

Responsibilities of the Faculty

- The classroom teacher will comply with all federal and local laws regarding special education needs.
- The classroom teacher will participate in all required training when available.
- The classroom teacher will identify struggling learners and refer the student to the counselor or IB coordinator as needed.

- The classroom teacher will implement the appropriate interventions as outlined in the student's IEP and/or 504 IAP accommodations.
- The classroom teacher will maintain accurate records of students' progress.
- The classroom teacher with the assistance of the exceptional student services facilitator and counselor will become familiar with the special needs of the exception student.
- The classroom teacher will provide differentiate instructions as outlined by the students' IEP or 504 Plan.
- The teacher will maintain discretion and confidentiality in providing special education needs services.

Responsibilities of the Parent

- Parents will play an active role in their child's education.
- Parents will have knowledge of their child's entitlement within the school district policy.
- Parents will communicate to the school all information and documentation regarding their child's special education needs.
- Parents will communicate with the school regarding any changes in their child's special education needs.
- Parents will make requests for needed child studies and services from the school or school district in a proactive manner.
- Parents will provide documentation needed for IBO accommodation requests.

Responsibilities of the Student

- Students will be proactive in asking for assistance from the school administrators, faculty, and staff.
- Students will be an active participant in classes and meetings.
- Students will follow all Orange County Public School and Winter Park IB policies and procedure.

Exceptional Student Services, Orange County Public Schools.

https://www.ocps.net/departments/exceptional_student_education/

